



Digital Multimedia Projector

Model name

PalmPro 7763PS

OPERATING GUIDE

Thank you very much for purchasing this Acer DLP™ Technology Projector.

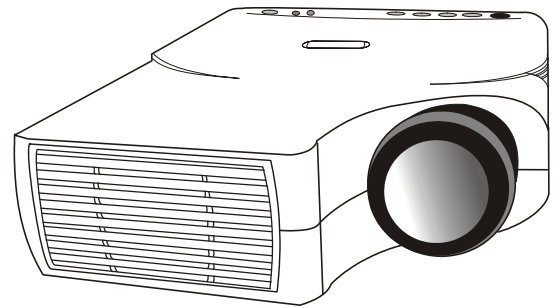
Please read this operating guide to ensure correct use of the device. After reading this manual, keep it for future reference.

Outline

This DLP™ Technology Projector can display various computer signals and NTSC/PAL/SECAM video signals.

Features

- (1) High brightness
- (2) High resolution
- (3) Compact size, light weight for portability
- (4) RGB output terminal
- (5) RS232 Communication
- (6) Mouse emulation
- (7) Complies with VESA DDC1/2B specifications



Copyright

Copyright © 2001 by Acer Communications & Multimedia Inc.. All rights reserved. No part of this publication may be reproduced, transmitted, transcribed, stored in a retrieval system or translated into any language or computer language, in any form or by any means, electronic, mechanical, magnetic, optical, chemical, manual or otherwise, without the prior written permission of this company.

Disclaimer

Acer Communications & Multimedia Inc. makes no representations or warranties, either expressed or implied, with respect to the contents hereof and specifically disclaims any warranties, merchantability or fitness for any particular purpose. Further, Acer Communications & Multimedia Inc. reserves the right to revise this publication and to make changes from time to time in the contents hereof without obligation of this company to notify any person of such revision or changes.

Fill this in!!

For the convenience of service, record the following information in the space below. The serial number is on the back of the product.

Monitor Information

Product 7763PS
Name:
Serial
Number:
Date of
Purchase:

Dealer Information

Dealer:
Telephone
Number:
Address:

Caution

TO PREVENT SHOCK, DO NOT OPEN THE CABINET. NO USER –SERVICEABLE PARTS INSIDE. REFER SERVICING TO QUALIFIED PLUS SERVICE PERSONNEL. AND PLEASE READ ALL OF THESE INSTRUCTIONS BEFORE YOU OPERATE YOUR PROJECTOR. SAVE THESE INSTRUCTIONS FOR FUTURE REFERENCE .

Safety Instructions

1. Read all of these instructions before you operate your projector and save for future reference.
2. The lamp becomes extremely hot during operation. Allow the projector to cool for approximately 45 minutes prior to removing the lamp assembly for replacement. Do not operate lamps beyond the rated lamp life. Excessive operation of lamps beyond rated life could cause them to explode in rare occasions.
3. Power is still available when the projector is in the standby mode. Never replace lamp assembly or any electronic components unless the projector is unplugged.
4. Do not attempt to service this product yourself, as opening or removing covers may damage the components inside and will void your warranty.

5. Do not place this product on an unstable cart, stand, or table. The product may fall, causing serious damage to the product.
6. The Standard Remote Control contains a low-power laser that acts as a pointing device during presentations. The light beam may cause injury if pointed directly into a person's eyes.
7. This product is capable of displaying inverted images for ceiling mount configurations. Please use suitable equipment for mounting the unit and make sure it is securely installed.
8. Openings in front or at two sides are for ventilation. They must not be blocked or covered.
9. For ventilation reasons, the fan continues to operate for about 2 minutes after the projector has been powered off. Please do not unplug the power cord until the fan stops.
10. Do not look straight at the projector lens during operation. The intense light beam may injure your eyes.

Table of Contents

Introduction	1
Projector Features	1
Description	2
A FRONT (figure)	2
B REAR (figure)	2
C BOTTOM (figure)	3
Installation	3
A. Positioning	3
B. Adjustable Feet	4
Moving the Projector	4
Accessories	5
Connection	7
A Connecting the Projector to Computer/Notebook	7
Operation	8
Turn On/Off Procedure	8
A Power on	8
B Standby	8
External Control	8
A Control Pad	8
B Remote Control	10
Usage and Replacement of Lamp	12
A Lamp/temperature Status LED Indicator	12
B Replacing the Lamp	14
OSD	16
Main OSD Menu	16
A Display Page	17
B Image Page	19
C Control Page	20
D Source Page	21
Other Correspondent Remote Functions and Messages	22
Maintenance and Troubleshooting	23
A Lamp Replacement	23
B Cleaning the Lens	23
C Troubleshooting	23
Specifications	25
A Optical	25
B Electrical	25
C Mechanical	25
D Preset Display Resolution Table	26
Appendix	27
AV Connection Port	27
AV Control Pad	27
A Connecting the Box	28

Introduction

Projector Features

A Image Resolution

Fully compatible with true SVGA(63PS) and supports XGA using advanced intelligent compression technology. The advanced intelligent compression technology enables it to present clear compression SVGA/XGA images without line omission.

B Brightness

Provides superior brightness of 800 ANSI lumens using TI's Digital Micromirror Device (DMD) and our own optical design, with a geometric effect that increases light usage efficiency. By increasing the light usage efficiency we can better reproduce the three basic colors (RGB) required for color reproduction on a single DMD.

C Portability

This projector has a sophisticated shape, like that of an attaché case, with a retractable carrying handle that is extremely compact and lightweight. It helps you make powerful presentations wherever you go with its 5-pound weight and B5 size.

D Keystone

The projection position is already set to the height of the line of vision; there is no keystone effect. Even when projecting above or under the height of the line of vision, image distortion (if any) can be adjusted using the keystone correction function.

E Multilanguage

The OSD (On Screen Display: information screens and menus) in 7 languages (English, Deutsch, Français, Italiano, Español, Swedish and Dutch) provides you with additional information to help you make corrections with OSD operation in your native languages.

F Auto Detect System

This projector can detect display signals from PCs with frequently used timing and do the optimization simultaneously. It does not require complicated adjustments in order to project picture images from PCs.

G Ceiling Mount and Rear Screen Projection

The projector is equipped with a full mirror scan conversion function (vertical/horizontal mirror), which allows the image to be reversed for ceiling mounting as well as for rear projection applications.

H AV box

An AV box is optional, and users can attach one or two to the projector. Additionally, our AV box video standard is compatible with NTSC U.S. and Canada standard

PAL Western Europe standard

SECAM France and Eastern Europe standard

NTSC4.43 Middle East standard

If users want to watch CATV, AV box will serve the need.

Description

A FRONT (figure)

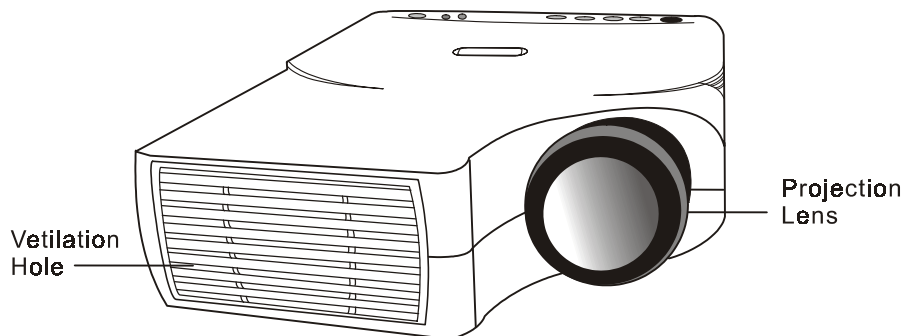


Figure 1 Front view of 7763PS

B REAR (figure)

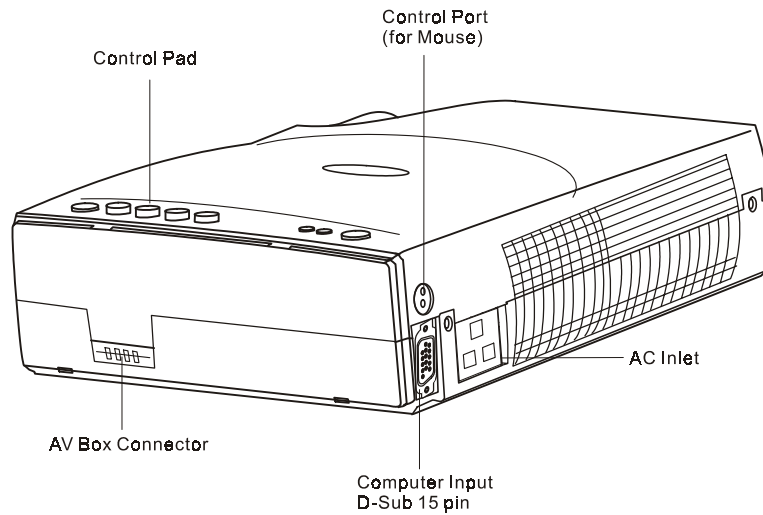


Figure 2 Rear view of 7763PS

C BOTTOM (figure)

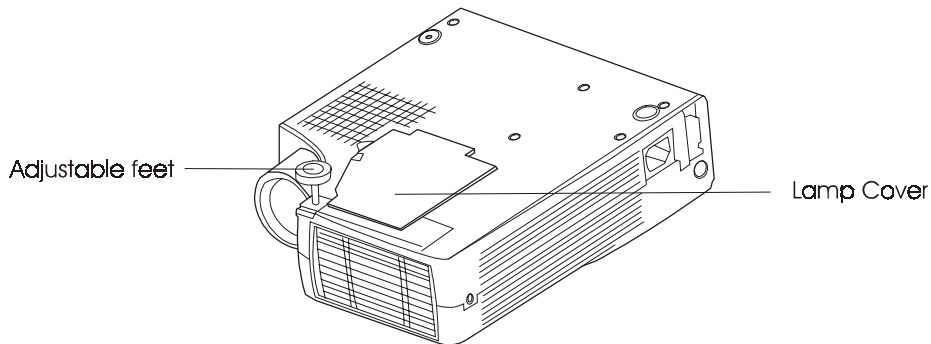


Figure 3 Bottom view of 7763PS

Installation

A. Positioning

- This projector is basically designed to project on a flat projection surface.
- This projector can be focused from 1.5m-10m.
- Refer to the figure below to adjust the screen size.

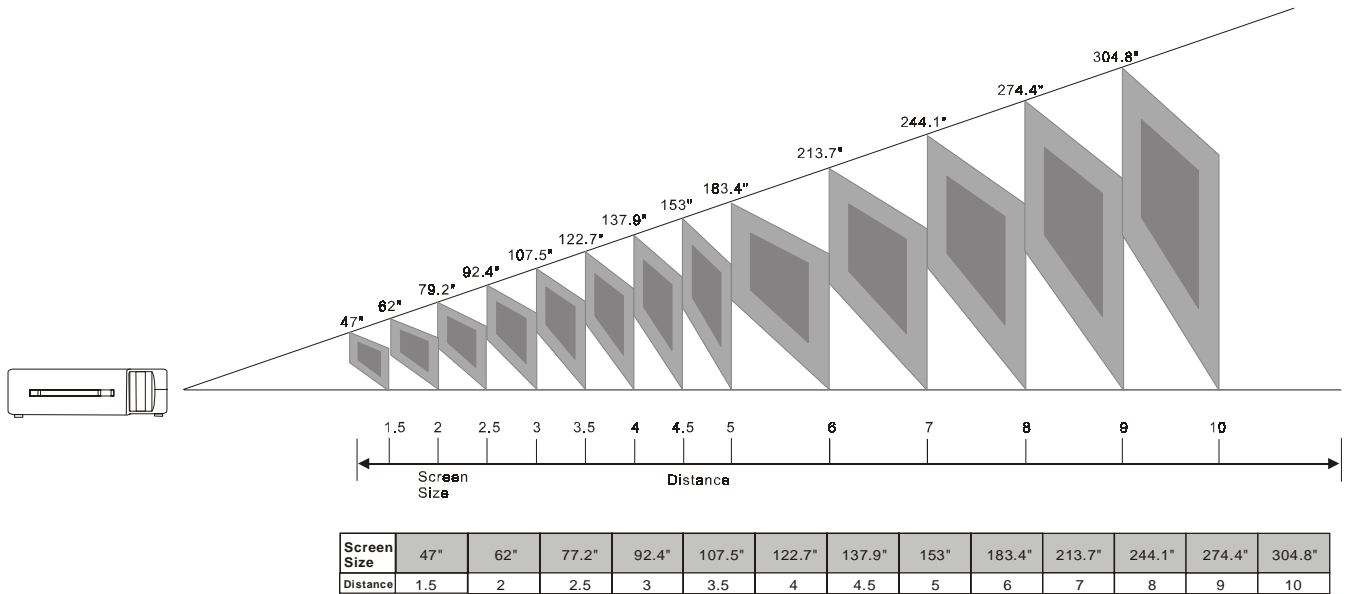
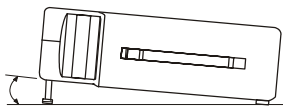


Figure 4 Positioning of 7763PS

B. Adjustable Feet

Picture tilt and projection angle can be adjusted by twisting Adjustable Feet. Projection angle can be adjusted 2° to 8.5° degrees



by rotating Adjustable Feet.

Figure 5 Adjustable feet

Moving the Projector

Use the carrying handle when moving the projector.

Replace the lens cover and rotate the feet fully clockwise (to shorten the feet) when moving the projector to prevent damage to the projector.

Caution

The carry bag (supplied) is intended to protect the projector from dust and scratches on the surface of the cabinet. It is not designed to protect the projector from external shock.

Do not transport the projector in an unsuitable transport case by using a courier or transport service. This may cause damage to the projector.

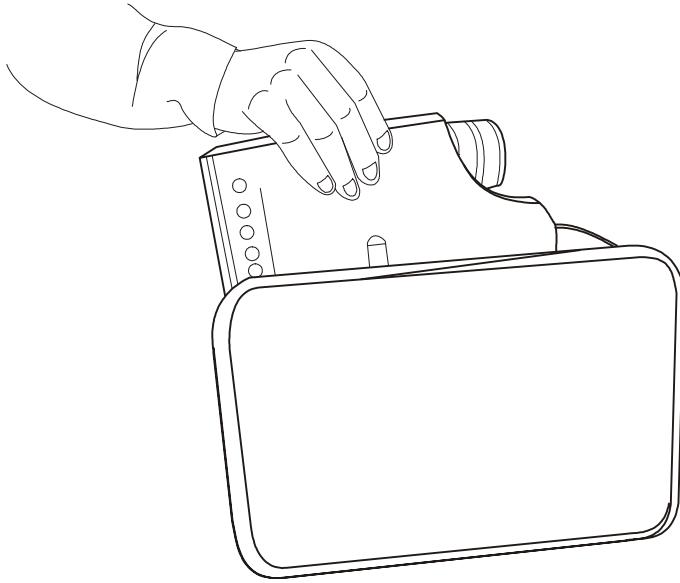


Figure 6 Moving the projector

Accessories

Please check and make sure your box contains everything listed below. If any pieces are missing, contact your dealer.

Please save the original box and packing materials in case you ever need to ship the unit.

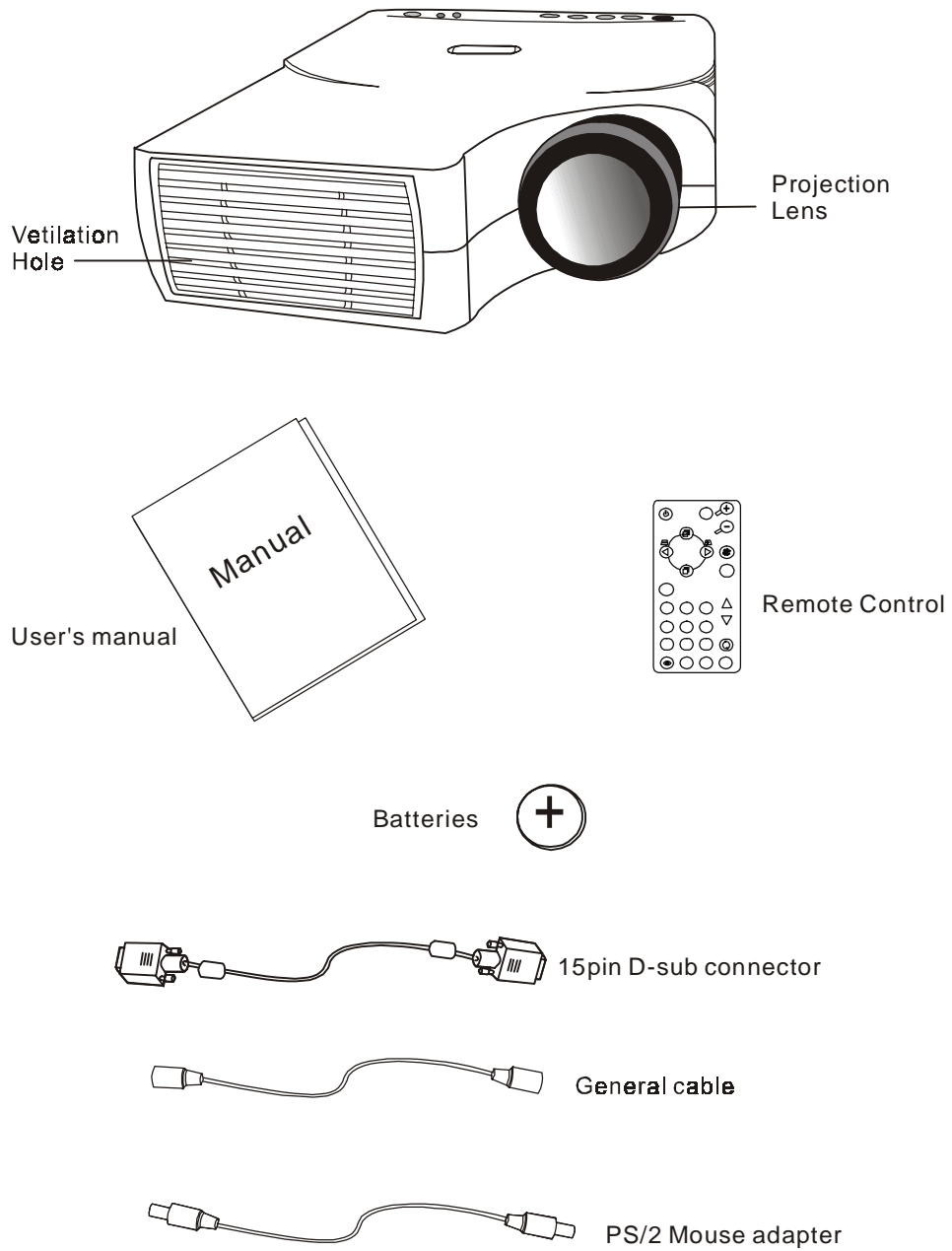


Figure 7 Accessories of 7763PS

Connection

A Connecting the Projector to Computer/Notebook

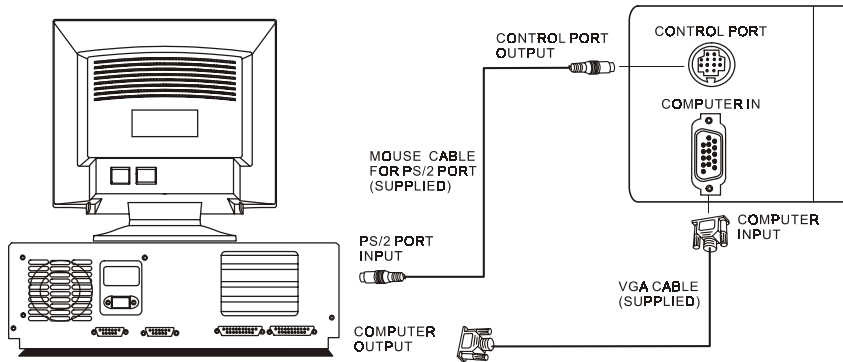


Figure 8 Connection to PC

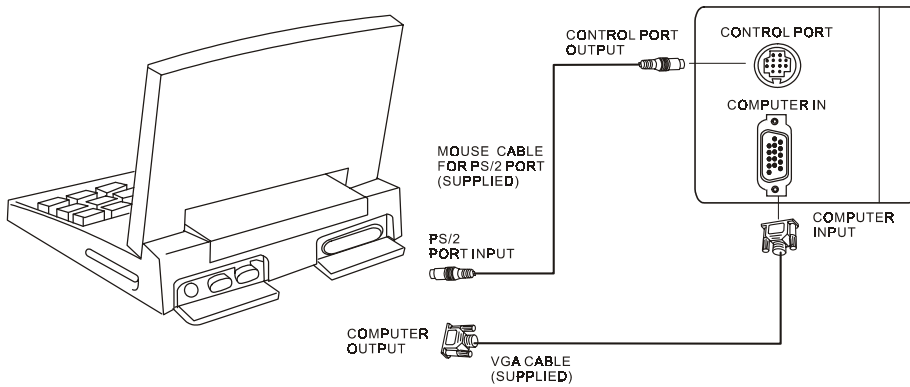


Figure 9 Connection to notebook

Operation

Turn On/Off Procedure

A Power on

Press the Standby/On key to turn on the lamp. The LED will blink green during warm up and then light solid green.

- "INPUT SIGNAL DETECTED, ACTIVATING AUTO IMAGE" will be displayed on the screen after the projector has identified the input signal;
- "SEARCHING" message will be displayed on the screen if there is no signal input;
- "SYNC IS OUT OF RANGE" message will be displayed on the screen if the horizontal frequency of the input signal exceeds the range of the projector.

B Standby

Press the Standby/On key for more than one second to turn off the lamp. The LED will then blink orange and the lamp will shut down, but the fan will continue to run for about 1 minute to cool the lamp. After the fan stops, the LED will turn to a light solid orange.

**Lamp Protection Procedure: If you try to turn on the lamp again while the LED is blinking, the projector will ignore the command until it has cooled down for one minutes.*

External Control

A Control Pad

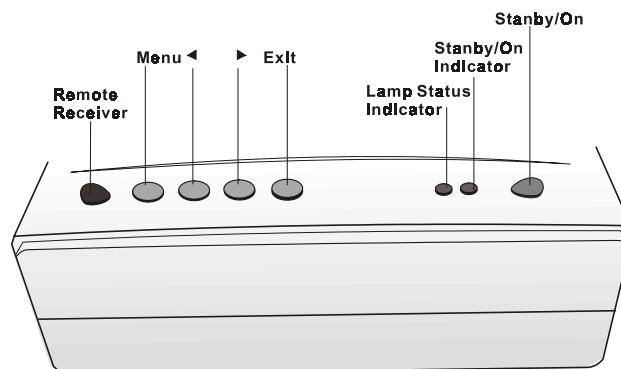


Figure 10 External control pad

MAIN UNIT	FUNCTION
Menu	To call the OSD menu. To enter sub pages. To select items.
▶	To navigate through sub pages or to increase the scale bar number.
◀	To navigate through sub pages or to decrease the scale bar number.
Exit	To exit from the current page or OSD menu, and save setting changes.
Standby/On	To turn the projection lamp on and off.
Standby/On indicator	Functions as an indicator showing the standby status.
Lamp status indicator	Lights or blinks when the lamp does not light.

B Remote Control

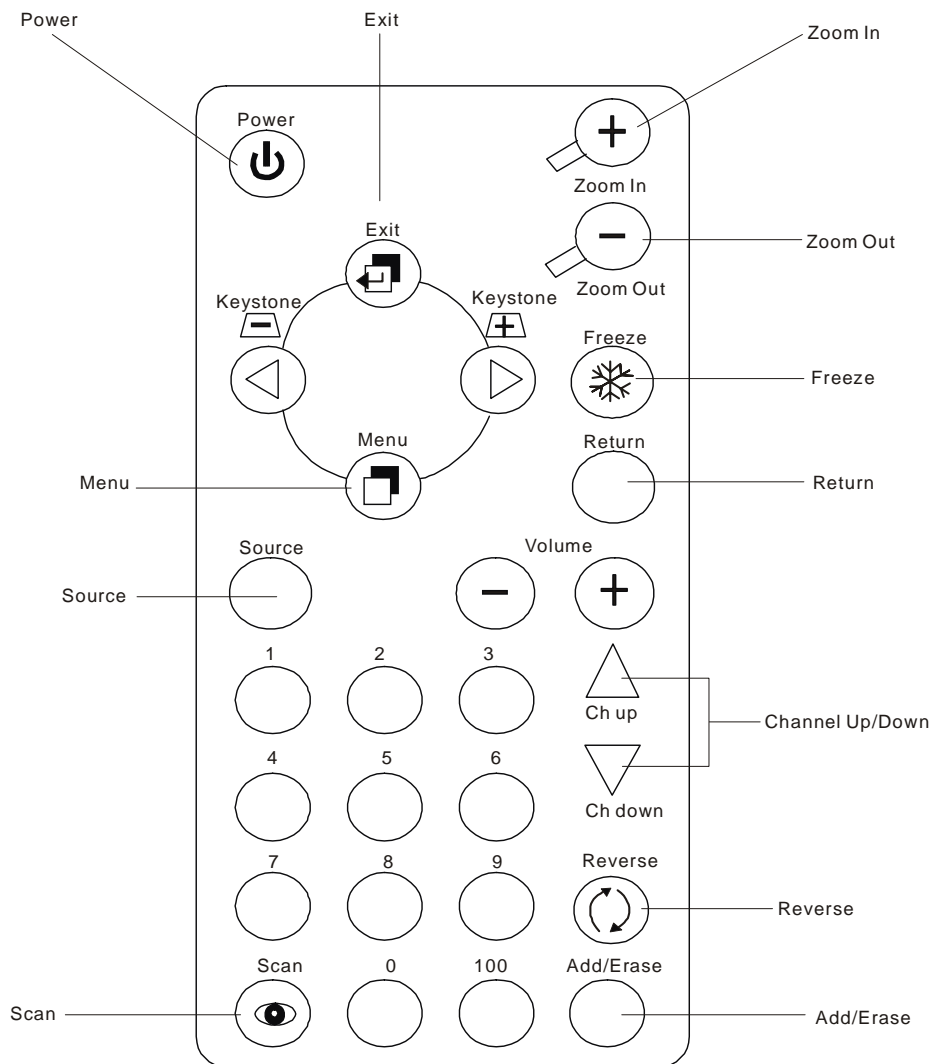


Figure 11 Remote control

The remote control allows you to operate the function keys on the projector and to emulate mouse function when the projector is connected to a computer.

Main Unit	Function
Standby/On	To turn the projection lamp on and off.
Freeze	Pressing this button displays a still (frozen) picture.
Magnify	Pressing this button partially magnifies a displayed picture. (Move the picture with the Disk Pad after pressing the Magnify button.)
Menu	Call the OSD Menu. To enter sub pages.

	To select items.
Source	Selects the input source.
Volume	Adjusts volume. The sound gets louder or quieter by pressing the "+" or "-" button.
Exit	To leave current OSD Pages.
◀ ▶	To move Left/Right among OSD items.

Inserting Batteries in the Remote Control

Be sure to follow instructions in placing batteries into the remote control units.

- Push and slide the lid in the direction of the arrow.
- Install batteries as indicated inside the battery compartment.
- Replace the lid and snap into place.

<p>⚠ Caution</p> <ul style="list-style-type: none"> • <i>Avoid excessive heat and humidity.</i> • <i>Do not mix new and old or different types of batteries.</i>

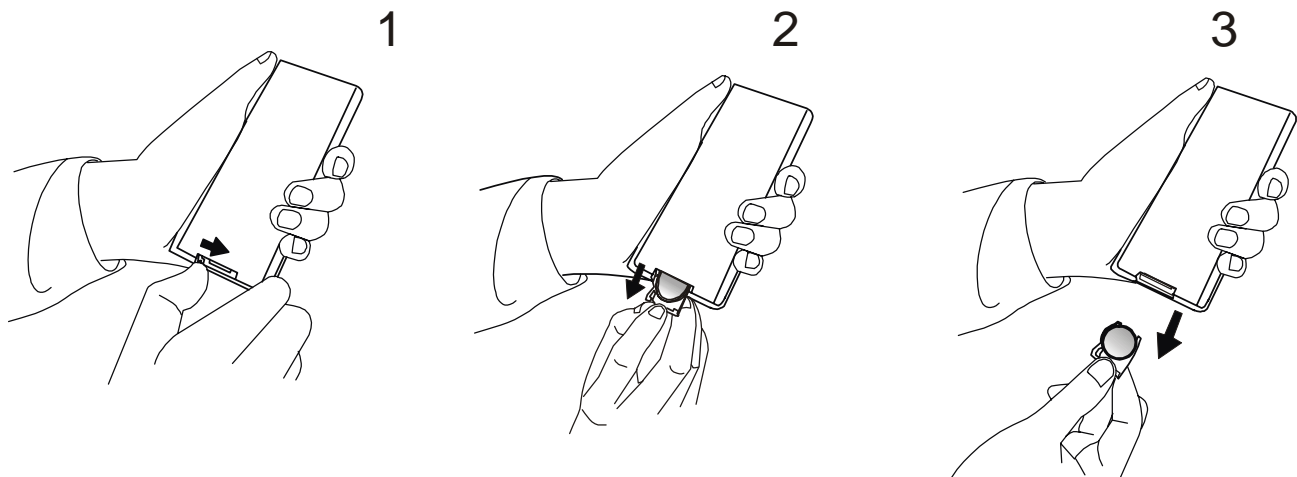


Figure 12 Battery replacement process

Remote Control Range

The remote sensors are located on the back of the unit. It can function in a range 50 degrees horizontal and 30 degrees vertical relative to a line that is a right angle to the remote sensor. The distance between the remote control and remote sensor must be shorter than four meters (13 feet).

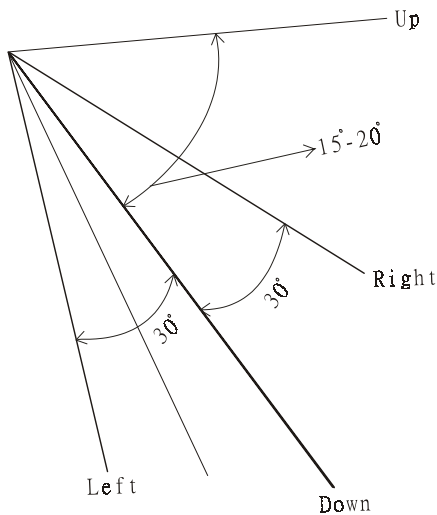


Figure 13 Range

Usage and Replacement of Lamp

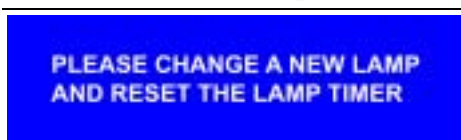
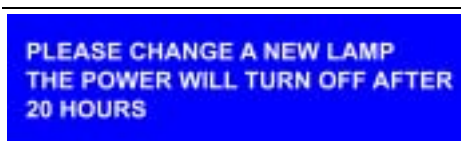

The light source lamp has a limited service life.

The picture will become dark or the color will fade after the lamp has been used for a long time. In such cases, continued use of the lamp could cause a malfunction. Replace the lamp with a new one.

A Lamp/temperature Status LED Indicator

1. Lamp in excess of service hours

When the LED light is a continuous red, it means the lamp has exceeded (*1500) service hours. After this light appears, it is advisable to replace the projection lamp as soon as possible.

 <p>Figure 14 Lamp replacement warning signal I</p>	<p>"CHANGE THE LAMP, AND RESET THE LAMP TIMER" will be displayed on the screen if the lamp has been operated for 1200 hours.</p>
 <p>Figure 15 Lamp replacement warning signal II</p>	<p>"CHANGE THE LAMP, THE POWER WILL TURN OFF AFTER 20 HOURS" will be displayed on the screen if the lamp has been operated for 1479 hours. The "20" will count down.</p>
 <p>Figure 16 Lamp replacement warning signal III</p>	<p>"CHANGE THE LAMP!" will blink on the screen together with a red LED if the lamp has been operated for more than (*1500) hours (see figure 18). The power will turn off automatically after 10 minutes. All three of the above messages will not display for more than 3 minutes, but each message will be displayed whenever you turn on the lamp.</p>

2. Lamp is not well attached

If the LED blinks rapidly, it indicates that the lamp is not attached properly.

3. Temperature is too high

If the projector's internal temperature is too hot to operate safely, the LED will blink slowly for one minute and then the lamp will turn off automatically.

4. Normal status

If the LED light is off, it means the lamp and temperature inside the projector are normal.



Caution:

The lamp indicator will light when the lamp becomes too hot. Turn off the power and let the projector cool for 45 minutes, then turn it on again. If the indicator is still shining, contact your dealer.

B Replacing the Lamp

Replacing the lamp

When replacing the lamp, turn off the projector and unplug the AC cord. Wait 45 minutes so that the lamp can cool. High-pressure lamp when hit, may explode if improperly handled.

 **Caution:**

- *Dispose of used lamps in accordance with local authorities.*
- *As the lamp is made of glass, do not apply shocks to it or scratch it.*
- *Also, do not use an old lamp, as this could cause the lamp to explode.*
- *If it seems that the lamp has exploded (for example, an explosive sound is heard), disconnect the power cord from the outlet and ask your dealer to replace the lamp. The lamp is covered by a front glass panel and an air-tight structure, but, in rare cases, the reflector and the inside of the projector may be damaged by scattered, broken pieces of glass, which could cause injury while being handled.*

- i. Turn the main power switch off and disconnect the power cord from the outlet.
- ii. Remove the lamp cover.
 - If hot, the lamp could cause burns. Wait for about 45 minutes until lamp has cooled down.
 - Loosen a screw and remove the cover.
- iii. Loosen the screw and pull the handle to remove the lamp.
 - If the screw is not loosened completely, you could hurt your fingers.
 - Do not insert your hand into the box after the lamp has been removed. (There are optical parts inside that, if touched, could result in color unevenness, etc.)
- iv. Replace the lamp with a new one and fix it using the same screw.
 - Firmly tighten the lamp screw. Loose screws could result in a poor connection, which could cause the unit to malfunction.
- v. Install the lamp cover and fix it using a screw.
 - To prevent burns, install the lamp cover and secure it using the screw.
 - Do not turn on power with lamp cover removed.
 - Whenever the lamp is replaced, reset the total operation time of the lamp. Do not reset if the lamp has not been replaced.
 - Do not reset the timer without changing the lamp, as this can cause the lamp to break.

Lamp Replacement Procedure

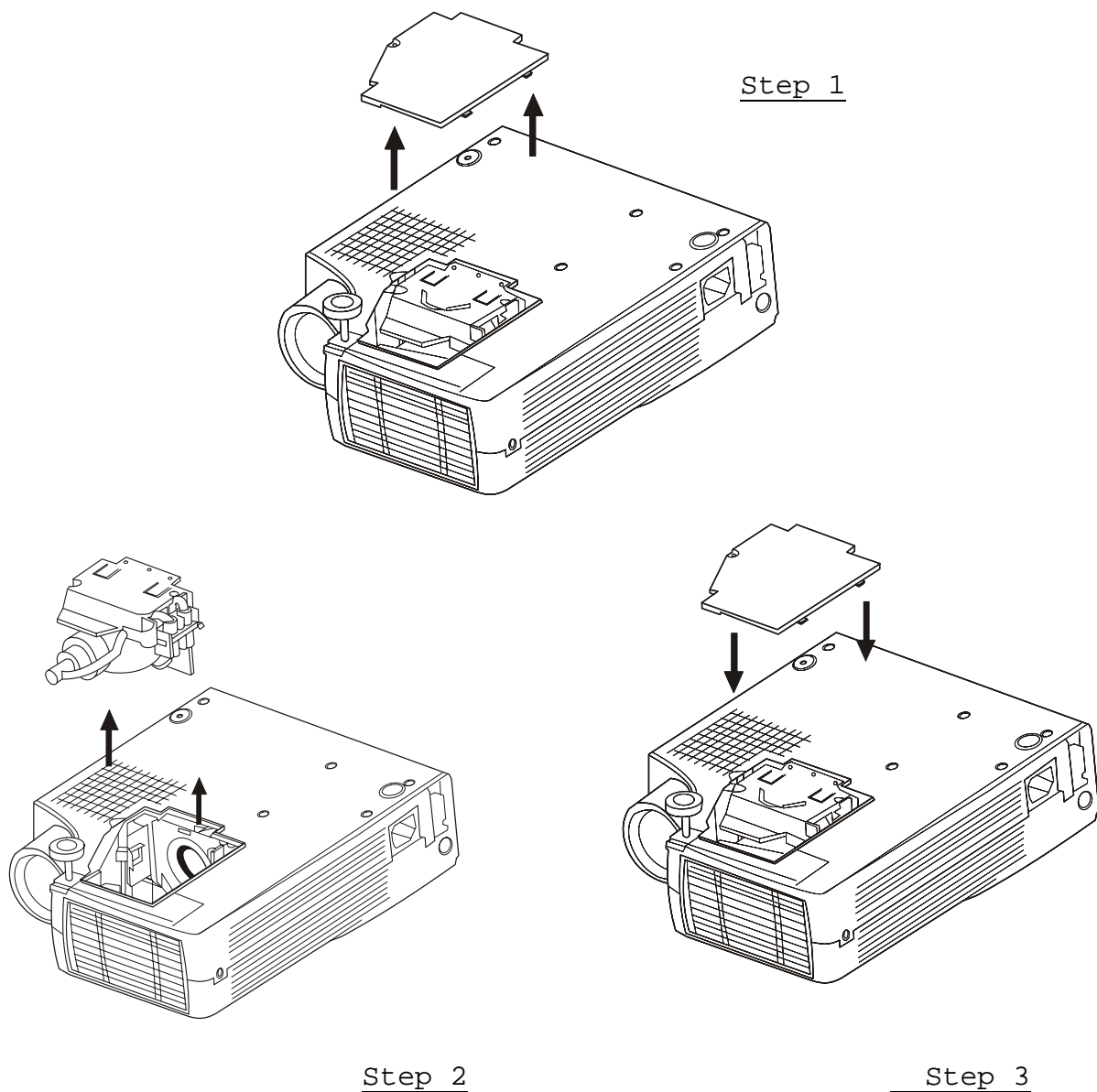





Figure 17 Lamp replacement: Step 1, Step 2, Step 3

Resetting Lamp Timer

If replacing the lamp after 1500 hours of operation, please carry out the following operation within 10 minutes of powering on.

OSD	FUNCTION
	<p>Press the MENU button into OSD menu, and use "▶" (KEYSTONE+) or "◀" (KEYSTONE-) to select the Control page. Then press the Menu button again to highlight the Lamp item.</p>
	<p>Press "▶" (KEYSTONE+) or "◀" (KEYSTONE-) buttons, the lamp usage time will display on the bottom of the screen and can be adjusted.</p>
	<ul style="list-style-type: none"> • Use the "▶" (KEYSTONE+) or "◀" (KEYSTONE-) buttons to select the "Reset" item and press the "MENU" to reset the usage time. • After reset the usage time, press "EXIT" (AUTO) to save and exit.

OSD

Main OSD Menu

Press the "Menu" key and the main OSD menu structure will appear as shown at right (Fig. 23). Whenever AV box is attached, 4 subpages appear in the menu: Display page, Image page, Control page, and Source page. However if input is from PC and no AV box is attached, Source will disappear in the menu.

Press the "Menu" key again to enter Display page items, or press "◀" or "▶" to select sub-pages. (The main OSD menu will automatically disappear if a key is not pressed within 10 seconds).

Press the "Exit" button to leave the current sub-page, and press the button again to leave the main OSD menu (at the same time the settings are saved).

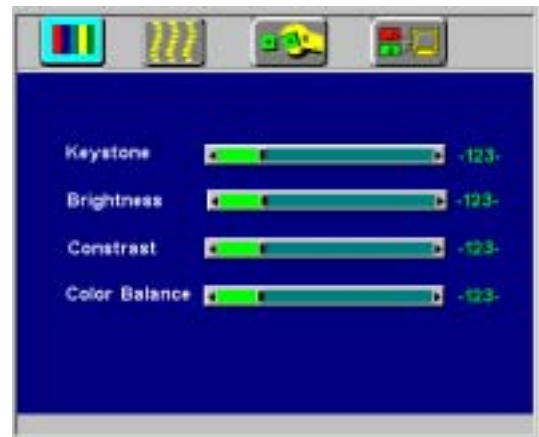


Figure 18 Main OSD menu

Input status	PC input without AV box	PC input with AV box	Video input with AV box

Subpage	Display	Display	Display
	Image	Image	Image
	Control	Control	Control
		Source	Source

A Display Page

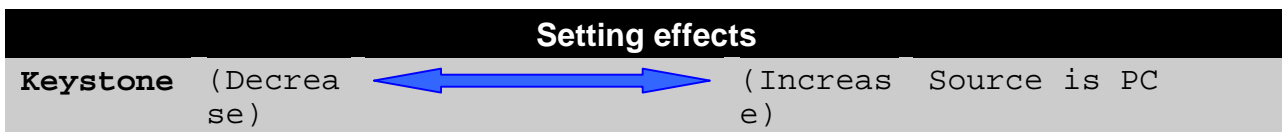
When a PC is the input source, there will be only four items on this page: Keystone, Brightness, Contrast, and Color Balance (Fig. 21). On the other hand, when the input source are video, S-video, TV or CATV, there will be other 4 items on this page: Keystone, Brightness, Contrast, and Sharpness (Fig.22).

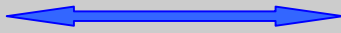
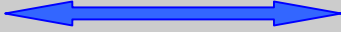
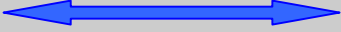
Press the "Menu" button again to scroll through the items; press "◀" or "▶" to adjust the item scale, or press the "Exit" button to go back to the main OSD page.



Fig.21 Display sub-page when the input source is PC(with/without AV box)

Figure 22 Display sub-page when the input source is video, s-video ,TV or CATV



Brightness (Dark)  (Bright)
Contrast (Lower)  (Higher)
Color Balance (Red) 

Sharpness (Soft)  (Sharp) Source is Video

B Image Page

Select the Image sub-page and the first item, "Auto Resize" will be highlighted. There are five items on this page: Auto Resize, H. Phase, H. Size, H. Position, and V. Position (Fig. 23).

If AV box is attached and the input is from Video other instead of PC, another different IMAGE sub-page including Image Ratio, System, Color and Tint will come out as figure 24.



Figure 23 Image sub-page... Only available when the input signal is PC



Figure 24 Image sub-page - Only available when the input signal is from video, video, TV or CATV

Setting effects

- Auto Resize** When Auto Resize is on, the projector determines the best fit of the image to the screen.
- H. Phase** If flicker occurs on a projected image, users may try to adjust the H. Phase manually.
- H. Size** If the projected image is too wide or too narrow for the screen, users may turn Auto Image off and adjust the H. Size manually to fit the screen size.

H. Position (move the image left) ← → (move the image right)

The Auto Image should be turned off to activate the H.



Position item. Position adjustments are saved when the projector is power off.

V. (move the image down)
Position (move the image up)
n Position adjustments are saved when the projector is power off.

Image Ratio 4:3 (Normal) 16:9 (Wide)

System To select the input video system standard. When an AV box or turner box is attached, the projector will automatically detect the video system. Users also can select desired video systems. When selecting system, the projector will detect the selected system simultaneously, and the OSD will still exit on the screen. The default setting of System is "Auto" (See Figure 29).

Color (Less) \longleftrightarrow (More)

Tint (Red) \longleftrightarrow (Green) Source is Video or S-Video

*Tint may not be adjusted with PAL/SECAM video signal input.

C Control Page

When users go into the Control sub-page, the first item, "Language," will be highlighted. There are five items on this page: Language, Mirror, Blank, Auto Off, and Reset (Fig. 25).

Figure 25 Control sub-page

Setting effects

Language	To select the OSD menu language. Eight languages are supported: English, French, German, Italian, Spanish, Swedish and Dutch. (See Figure 25).
Mirror	To select Normal projection, H-Invert projection, V-Invert projection, or H/V Invert projection.
Blank	To select the background color when the image/sound is blanked.
Auto Off	To set the time to turn the power off after the start up screen is displayed and no signal is detected or sync is out of range. To select, use "◀" or "▶" to set the time. 0 means Auto Off function inactive. *Default setting is 0 (stop).
Reset	To reset display, image and control settings to factory settings.

D Source Page

This Sub-page will only show up whenever AV box is attached.

There are five items on this page: Source, Volume, Treble, Bass, and Mute.

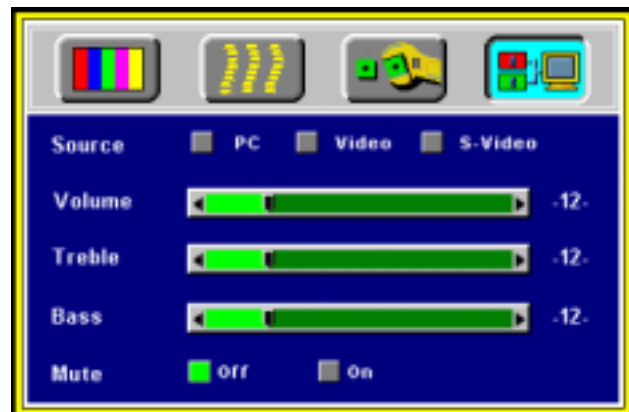


Figure 26 Source sub-page(AV box attached)

Items	Description
Source	3 input sources are available in the items when AV box is connected to the projector: PC, Video, S-video
Volume	To set the volume level of speaker built in the AV box.
Treble	To set the treble level of speaker built in the AV box.
Bass	To set the bass level of speaker built in the AV box.
Mute	To turn on/off the mute function.

*The priority of input signal detection: a. PC b. S-Video c. Video

*When selecting input sources, the projector will detect the selected input simultaneously, and the OSD menu will still exist on the screen.

Other Correspondent Remote Functions and Messages

OSD	FUNCTION
<div data-bbox="300 495 531 607" data-label="Image"> </div> <p data-bbox="357 620 475 647">Source</p> <div data-bbox="331 792 496 875" data-label="Image"> </div> <p data-bbox="357 893 475 920">Freeze</p> <div data-bbox="137 1093 692 1167" data-label="Image"> </div> <p data-bbox="357 1180 475 1207">Volume</p> <div data-bbox="331 1352 501 1435" data-label="Image"> </div> <p data-bbox="347 1453 485 1480">Magnify</p>	<p data-bbox="716 486 1466 618">The selected source will be displayed at the bottom right of the screen for 3 seconds after selecting the source. (PC, VIDEO, S-VIDEO).</p> <p data-bbox="716 678 1466 1030">The image will be frozen when the "Freeze" button is pressed. A " " mark appears at the lower right of the screen for 3 seconds during the freeze function. Furthermore, a "▶" mark appears at the lower right of the screen for 3 seconds when freeze is released. "Freeze" is released when the source button or the "Freeze" button is pressed again.</p> <p data-bbox="716 1046 1466 1211">Press volume + or - buttons to adjust the volume. The OSD message below will appear: (The message will disappear automatically 3 seconds after the volume is adjusted.)</p> <p data-bbox="716 1227 1466 1563">By pressing the magnify "+" button, the center of the picture can be magnified. Press the button again, and the image will be further magnified (to a maximum of 4X). Press the magnify "-" button, and the size of the magnified image will be reduced by 50 percent. To return to the normal display mode, press the "Return" button.</p>

Maintenance and Troubleshooting

4

A Lamp Replacement

Refer to Page 11

B Cleaning the Lens

Follow these steps to clean the projection lens:

1. Apply a non-abrasive camera lens cleaner to a soft, dry cleaning cloth (abrasive cleaners, solvents or other harsh chemicals might scratch the lens).
2. Avoid using an excessive amount of cleaner.
3. Lightly wipe the clean cloth over the lens.
4. Affix the lens cover whenever the projector is not in use.

C Troubleshooting

PROBLEMS	TRY THESE SOLUTIONS
NO POWER	<ul style="list-style-type: none">✓ Plug the power cord into the AC Inlet.✓ Plug the power cord into the power Inlet.✓ Wait two minutes after the projector has been turned off before turning the projector back on.
NO PICTURE	<ul style="list-style-type: none">✓ Check that you have selected the proper input source.✓ Ensure all cables are connected properly.✓ Adjust the brightness and contrast.✓ Remove the lens cap.✓ Is the POWER indicator flashing?✓ Is the STATUS Indicator flashing?
IMAGE ISN'T SQUARE ON THE SCREEN	<ul style="list-style-type: none">✓ Reposition the unit to improve its angle on the screen.✓ Is the vertical offset properly corrected using the keystone function?
POOR COLOR	<ul style="list-style-type: none">✓ Select the correct video system.✓ Adjust brightness, contrast, or saturation.
IMAGE IS BLURRED	<ul style="list-style-type: none">✓ Adjust the focus.✓ Reposition the unit to improve its screen angle.✓ Ensure the distance between the unit and screen is within the adjustment range of the lens.
REMOTE CONTROL DOESN'T WORK	<ul style="list-style-type: none">✓ Replace the batteries with new ones.✓ Make sure there is no obstacle between the remote control and the unit.✓ Stand within 4 meters (13 feet) of the unit.✓ Make sure nothing is blocking the receiver on

	the control pad.
NO SOUND	<ul style="list-style-type: none">✓ Check audio cable connection from audio input source.✓ Adjust audio source.✓ Press "Volume" (+) button.✓ Press "Mute" button.

Specifications

A Optical

DMD™ 1-chip 0.7" DMD™ (Digital Micromirror Device)

Lens Fixed zoom ,manual focus
(F=2.7 f=23)

Lamp mercury lamp 150W

Image size 45" to 300"

Projection Distance 1.5 to 10 M

Contrast Ratio 450:1

B Electrical

Inputs RGB(H:31.47 to 68.70 kHz V:56.25 to 85.00 Hz)

Video (NTSC/PAL/SECAM/NTSC 4.43)

Color Reproduction Full color, 16.7 million colors simultaneously.

Power Requirement 100 to 240 VAC, 50 to 60 Hz

C Mechanical

Dimensions 24.3 cm (L)× 6.2 cm (H)× 19.8 cm (W)

Net Weight 2.3 kg/5 lb.

Operational Temperature projector: 10 to 40

D Preset Display Resolution Table

Resolution	H Sync (kHz)	V Sync (kHz)	Remark
640x350	31.5	70.1	
640x400	37.9	85.1	VESA
720x400	31.5	70.0	
720x400	37.9	85.1	VESA
640x480	31.5	60.0	VESA
640x480	37.9	72.8	VESA
640x480	35	66.7	Macintosh
640x480	43.3	85.0	VESA
800x600	35.2	56.3	VESA
800x600	37.9	60.3	VESA
800x600	46.9	75.0	VESA
800x600	48.1	72.2	VESA
800x600	53.7	85.1	VESA
832x624	49.7	74.5	Macintosh
1024x768	48.4	60.0	VESA
1024x768	56.5	70.1	VESA
1024x768	60.0	75.0	VESA
1024x768	68.7	85.0	VESA

Appendix

Guideline to Acer 7763PS AV box

1. Features and Connection

AV Connection Port

This box is compatible with RCA input, S-Video input, audio output .

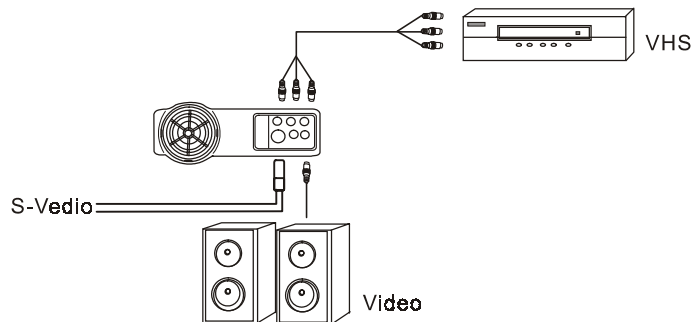


Figure 27 Connection of AV box

Speaker	
RCA Jack	For Video and Audio Input from VHS or V8
S Video Port	For S-Video Input
Phone Jack	For Video input/Output

*AV box is sold separately and is not included in the standard configuration of accessories in the unit. Please contact the dealer nearest you need the box or visit the Acer Peripherals, Inc. Web site for more information.

AV Control Pad

Source	Select the source
Volume up	Turn the volume upward
Volume down	Turn the volume downward

Connecting the Box

Please follow the instruction here to place the AV box:

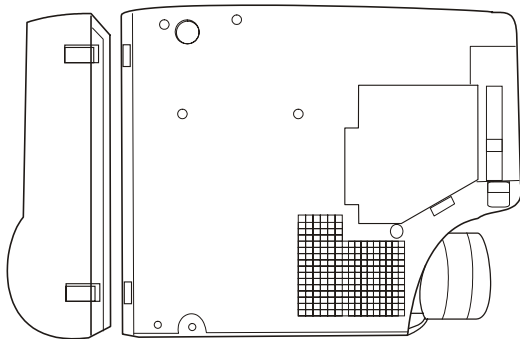


Figure 28 Bottom View of AV box

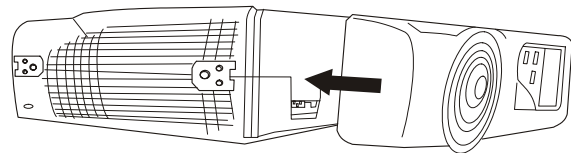
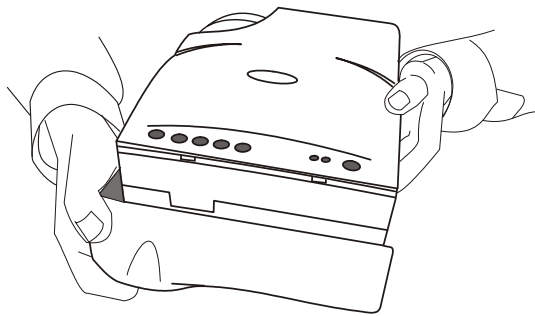


Figure 29 Side View of AV box

To attach the AV box to the unit :



A/V function.

1. Precisely place the two chocks at the lower surface of the AV box into the lower slots in the correspondent position in the projector.
2. Slowly push the box to fit the unit and, meanwhile, insert the box plug into the A/V connector closely.
3. Plug in the correct cord into the correspondent jack or port to perform

4. Select inputs by pressing "Source" key, and select channel by the channel up or down keys.

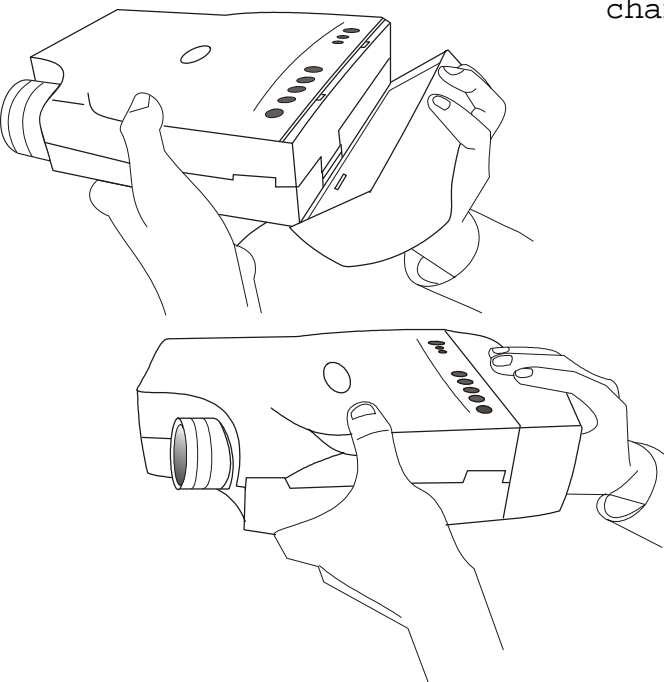


Figure30 Connecting the Box